

Holon System Company Profile

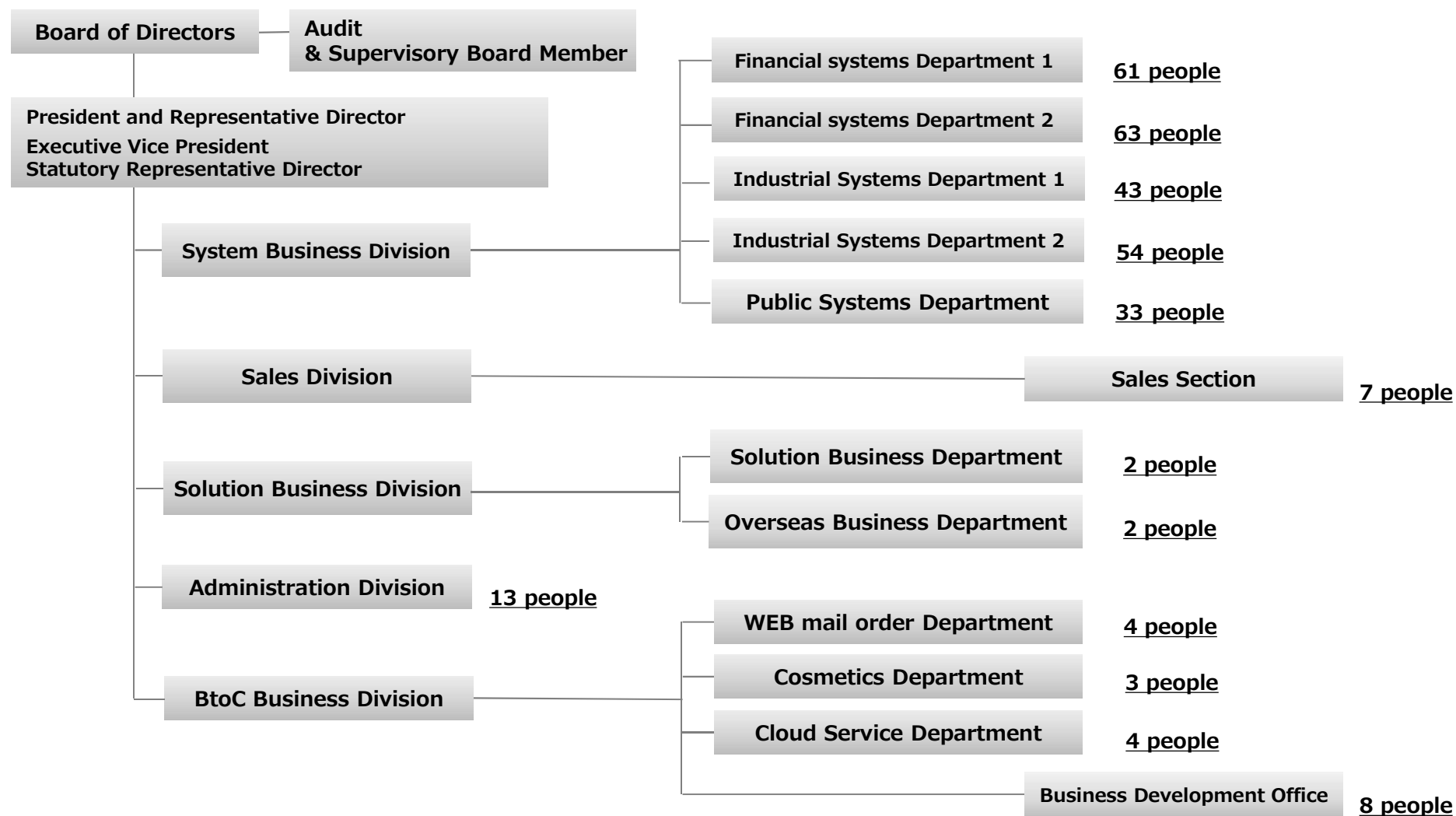
Ver.20200401

Company Profile



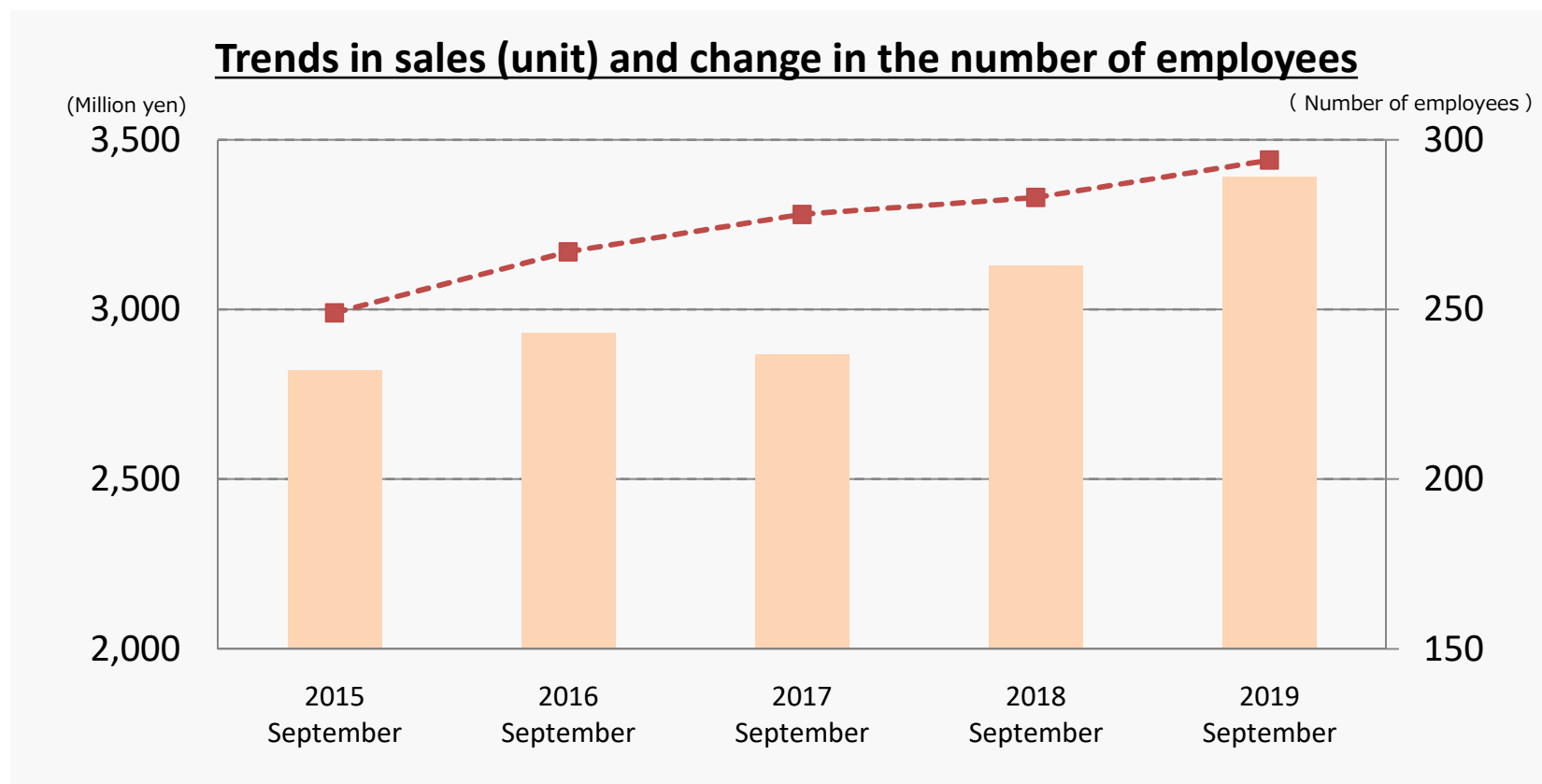
Company Name	Holon System Company	URL	http://www.holon.co.jp
Established	May 23, 1988	Major business partners (including affiliated companies)	Fujitsu Group (Core Partner) TIS INTEC Group (Excellent Partner) SCSK Corporation (Core partner) NTT Group
Capital	81,571,500 yen		
Representative	President and Representative Director Masahiro Kobayashi Executive Vice President Statutory Representative Director Shinichiro Kobayashi		
Number of Employees	301 people (as of Apr. 1, 2020)	Office	<p>【Tokyo Head Office】 Address 2nd Floor, Sanbancho Tokyu Building, 8-1 Sanbancho, Chiyoda-Ku, Tokyo, Japan Telephone +81 3-3511-5570 FAX +81 3-3511-5577</p> <p>【Osaka Office】 Address 16th Floor, Kintetsu Dojima Building, 2-2 Dojima, Kita-ku, Osaka, 530-0003, Japan Telephone +81 6-6347-8888 FAX +81 6-6347-9009</p> <p>【Nagoya Office】 Address 14th Floor, Amnavil Asahi Kaikan, 1-3-3 Sakae, Naka-ku, Nagoya, 460-0008, Japan Telephone +81 52-265-5581 FAX +81 52-265-5582</p>
Officer	<p>Managing Executive Officer Shinichi Tomita</p> <p>Director and Executive Officer Kenji Yamada, Shigeki Nakayama</p> <p>Executive Officer Michio Fujisawa, Takashi Unno, Hiroyuki Sato, Takeshi Miyagawa Hiroki Yanagihara, Nobuyuki Funatsu</p> <p>Audit & Supervisory Board Member Yasushi Nomura, Yoshiki Watanabe</p>		
Business Activities	<ul style="list-style-type: none"> ·System consultation ·System integration ·Entrusted development of software ·Internet electronic wholesaler etc. 		
Certification / Approval	<ul style="list-style-type: none"> ·ISMS JISQ 27001:2014 ·Privacy Mark (10820305 (08)) ·Worker dispatch business permission (派13-309804) 		
Member organization	The Tokyo Metropolitan Information Industry Association	Affiliates	<ul style="list-style-type: none"> ·VAN NET WORK Co.,Ltd. ·I Criar CO., LTD. ·HOLONSYSTEM (THAILAND) Co.,Ltd.

Organization Chart



*As of Apr. 1, 2020

Performance Trend



	2015 September	2016 September	2017 September	2018 September	2019 September
Sales (Million yen)	2,820	2,932	2,867	3,128	3,390
Number of employees	249	267	278	283	294

Owned Technical Area

OS	→ Windows, Linux, AIX, HP-UX, Solaris General purpose machine (Fujitsu, IBM, Hitachi, NEC, etc.)
Language	→ Java, JavaScript, Ruby, C/VC++, .NET, PHP COBOL, PL/ I , VB, etc.
DB	→ Oracle, SQLServer, DB2, PostgreSQL MySQL, MariaDB, Percona, AmazonRDS
Middleware	→ .NET Framework, Interstage, Intramart Ruby on Rails, Nginx, Apache, Redis, etc.
Tools	→ Eclipse, HULFT, JP1, SVF, Curl, Git, Redmine, Rspec, Turnip, Cacti, Capybara, etc.
Misc.	→ AWS, Heroku, R, Jenkins, Docker, Tableau, etc.

Possession Qualification

Information technology engineers examination	Number of qualified people	Vendor certification examination	Number of qualified people
Applied Information Technology Engineer	57	ORACLE MASTER Silver	7
Fundamental Information Technology Engineer	170	ORACLE MASTER Bronze Oracle Database	5
Network Specialist	1	Oracle Certified Java Programmer,Silver SE	5
Database Specialist	5	Oracle Certified Java Programmer,Bronze SE	11
Embedded Systems Specialist	2	MySQL5.6 Developer	2
Project Manager	4	MySQL DataBase Administrator	3
Information Security Specialist	4	Ruby Association Certified Ruby Programmer Silver	3
Information Security Management	18	Statistical Test Level 2	1
Information Technology Passport	9	The Official Business Skills Test in Bookkeeping, 2nd grade	12

※ As of Jan 1, 2020 (Proper Only)

Introduction of Businesses

Business Outline

Lease

Leasing means the leasing company purchases machine equipment from a company and leases the property for long periods. Consulting focusing on the business aspects of the leasing company, and we are developing systems that are the core of our business. In system development, we have broad development experiences exceeding 20 years, and systems designed by engineers with in-depth business knowledge contributing to the improvement of customer's performance and growth field development.



Prospect

Each leasing company provides not only the leasing business but also various financial services in line with social changes to overseas business centering on Asia, medical and healthcare business, and environment and energy business.

We are enhancing our technical capabilities to respond to the diverse needs of customers and Fintech centered on AI technology.

Business Outline

We have been working on a system that comprehensively manages credit card enrollment, card usage, payment, etc.
Our vast business knowledge and skillful engineers continuously receive long-lasting customer trust.
In addition, we are participating in system development of the life and non-life insurance.
We are striving every day to solidify our foundations further and ensure customer trust.



Prospect

Currently, we are developing a system that enables Near field communication(NFC) on mobile terminals and transactions on ATMs and payment terminals.
In anticipation of the transition to a cashless society in the future,
we are strengthening not only the card system
but also the technical capabilities to respond to changes in the mobile payment and payment business.

Business Outline

We provide IT consulting, system development and operation in response to customer requests for Japanese industrial companies, mainly major Kansai ground manufacturers, and support their management with IT.

By accumulating important development know-how in the industry by developing the core system that composes SCM such as sales and production management and the accompanying SFA / CRM, and developing package solutions, we also undertake the maintenance area after system production. We realize stable operation.



Prospect

In the following areas, which will be the major themes in the industrial world for the next 10 to 20 years, we aim to pursue customer satisfaction and grow together with customers by further improving technology and providing high value-added IT services.

- ① Automotive-related fields undergoing a major revolution through the penetration of CASE
- ② High-tech fields contributing upstream in the supply chain, with an eye on next-generation vehicles and 5G development
- ③ High-quality and safe Japanese food-related fields where export momentum is increasing due to overseas evaluation

Business Outline

We propose and build optimal system development for many companies, including Japan's leading retail and distribution companies, to meet the needs of our customers.

In the field of development achievements, we have accumulated a wide range of achievements, including core systems for retail companies, logistics and inventory management systems, totalization systems, construction management systems, and so on.

We respond to customer demands with our technology that can handle everything from existing systems to the latest technology base.



Prospect

In order to respond to increasingly sophisticated system needs, we will expand the range of engineers capable of handling the evolution of IoT without neglecting to improve the technical capabilities.

Business Outline

We are doing development of mission-critical and peripheral systems as well as the consultation of introduction, focusing mainly on the work of local governments, especially welfare services. Also, we have accumulated achievements in system development at social-infrastructure centering on energy and gas companies like energy deregulation related business and map information utilizing businesses.



Prospect

Based on experience of nursing care, welfare, and national health insurance system development, future EHR (lifelong health medical electrons records), we are aiming to broaden into the medical field. In the field of energy, we aim to expand our business based on the increase of utilizing ICT (information communication technology) according to liberalization and demand for system development.

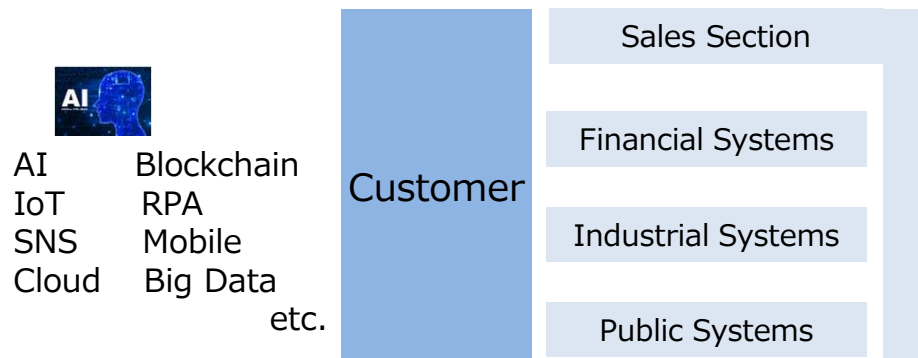
Business Outline

Based on a wide range of system development experience ranging from private demand to public demand, by following the speed of "change in market needs" and "evolution of ICT leading edge technology", discover new business that will lead to the future and strive to expand business.

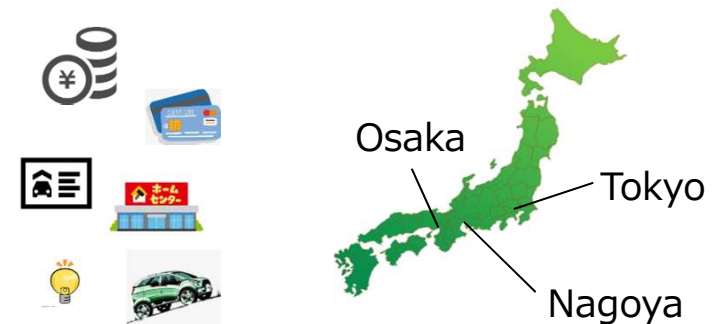
Business domain

- Leasing industry where diversification and globalization management are urgent.
- Credit industry approaching a real cashless era.
- Insurance industry responding to declining birthrate, aging population and declining population.
- Automotive industry corresponding to the wave of CASE represented by automatic driving.
(**CASE** C:Connected,A:Autonomous,S:Shared/Service,E:Electric)
- Electronic component industry that supports the revolution of the automobile industry once every 100 years.
- Energy industry promoting business changes associated with liberalization.
- Government area aiming for highly sustainable social security system. etc.

Positioning



Office



Overseas Business Department



April 2014 as a BOI company in Thailand
HOLONSYSYSTEM (THAILAND) Established



タイ市場の注目日本企業100社

June 2014

"100 Japanese companies of attention in the Thai market"
Growing smoothly, including being elected

To create
New market and field



February 2017, As an internal capital enterprise in Thailand

**Holon Global Services
Established**

Package Business

- Strong support of manufacturer quality control

Factory-Zero QC

- Visualize the operation of machine equipment

P@t net (Cooperative System Machine)

SI Business

- System development centered on OSS
- Procurement of various hardware and software
- Security and network construction

Product Sales Business

- Cosmetics (In-house products)
- Chemical products



To expand the ASEAN market in 2020

What is Holon System's solution business?

Solving business issues facing end users using our strengths such as consulting, various solutions and tools.

Issues facing customers (example)

- I want to increase productivity
- I want to promote work style reform
- I want to reduce inventory
- I want to visualize the factory
- I want to increase sales channels ... etc

Holon System Solutions

 **i-Reporter**  **ASPROVA**
High Speed Scheduling

 **テクノシステム
実績班長**



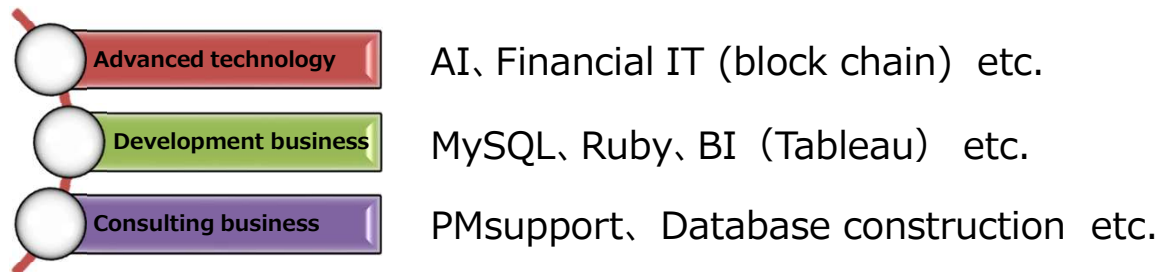
 **UiPath**
Robotic Process Automation



consulting & proposal

Business Outline

The Business Development Office is a young-centered organization that challenges research and study on advanced technologies such as AI, OSS (Open Source Software) related development business and consulting service business related to project management.



Prospect

Investigating trends of advanced technologies is the lifeline of IT companies and an important mission of the Business Development Office.

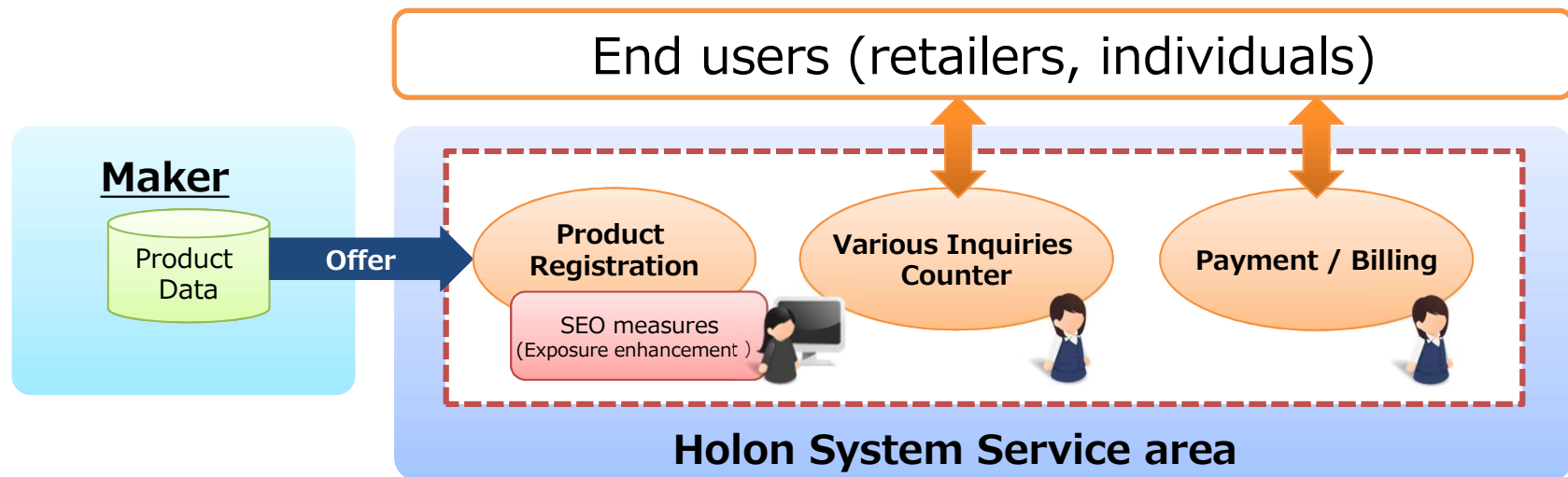
It is important to lead direction for future business expansion by OSS related development and consulting businesses.

Also, the development of advanced technologies represented by AI is fast, and societal reformation is taking place. We will work on mastering and promoting new schemes such as exploratory stage type development methods.

WEB mail order Department

EC consulting service for manufacturers

We will solve various problems related to EC site transactions by manufacturer



We respond quickly and flexibly to the environment surrounding customers' Web sales and aim to further expand sales.

Business Outline

Together with the manufacturer, we developed a product that we thought we would really want from the customer's standpoint, and launched the cosmetics brand “celife”.

What we are especially particular about is that the burden on the skin is light. Extra components have been removed as much as possible to reduce the burden on the skin so that people with sensitive skin can use it with confidence.

In sales, we have also created a new mail-order system centered on the Internet, providing an environment where customers can purchase with peace of mind.

■ Serum with natural ceramide CERAMIDE20



Ceramide 20 (Serum) contains the best ceramide ingredient in the series. Ceramide, which is nano-sized by a special manufacturing method and easily penetrates, penetrates deep into the skin and plays a role in firmly retaining moisture in the body.

“celife” skincare lineup



■ Essence of human stem cells STEMCELL20

Human-derived stem cell serum is a next-generation skin care product that has received a great deal of attention in the field of regenerative medicine. Stem cells derived from humans keep the reduced cells in good shape. The more serum you use, the more your skin will have less trouble.



Cosmetics Department

Aiming to establish a cosmetics brand, launched the Cosmetics Division from 2019

Main activities and goals

- ① Creation of safe, secure and high quality products by product planning
- ② Create our own sales promotion / sales channels, create a profitable business system
- ③ We aim to be highly recognized as a cosmetics brand

Current approach (New product launch in March 2020)

Raw material selection and production base selection for new product production, study of product branding measures

Product line-up



Sales promotion measures

- ① Campaign to present skin care products to White Day and Mother's Day gifts
[March : White Day] Let's give skin care products that moisturize your skin and mind as a special gift for loved ones
[May : Mother's Day] Let's give skin care products rather than bouquets with the feeling "I want you to be beautiful forever"
- ② Cosmetics PR by SNS such as Instagram and YouTube
[Cosmetics PR in Instagram] [Cosmetics demonstration video by Youtuber]
- ③ We carry out sampling before release and post review in company HP or "@cosme"
[Post review in company HP] [Sample distribution for contributors to review sites]

Business Outline

We developed a new web application as our own cloud service, and started providing the service in February 2020 under the name of "Subsidy Cloud".

This service is aimed at small and medium-sized businesses interested in using grants, and consists of matching available grants and supporting the creation of various difficult application forms.



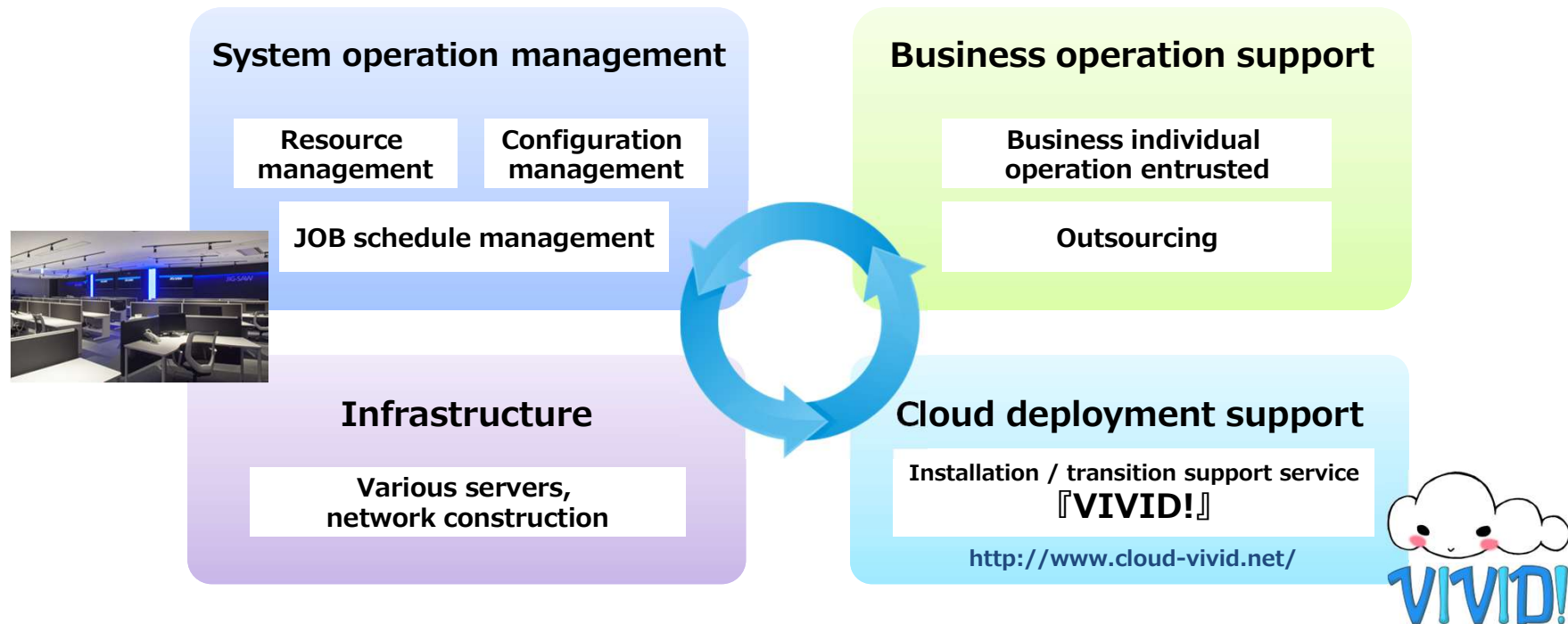
Prospect

"Subsidy Cloud" is a service that allows you to easily create a subsidy application form on the cloud. Until now, it was necessary to create documents by directly inputting into Word and Excel, which required labor and labor. However, the input support function of the subsidy cloud and the function of data linkage can greatly reduce the trouble and prevent errors that may cause non-payment of subsidies.

In addition, you can easily find the subsidies that can be used by your company according to your purpose, and you can smoothly create and complete the application form as it is.

The subsidy cloud is supporting the active use of subsidies by small and medium-sized enterprises, which are said to be 4 million companies.

This is a core subsidiary of Holon System, which mainly conducts system operation, Business operation, and cloud deployment support, etc.



Covering the entire system-life-cycle within the group